

Spectrum Business Centre Anthony's Way Rochester, Kent, ME2 4NP

Greenleaf are delighted to offer this Commercial unit on the established Medway City Estate. Offering parking for two vehicles, large working space, mezzanine level, kitchen and two w/c's one of which is accessible. Located in the Spectrum Business Centre, and accessed off of Anthony's Way, which provides access to the Medway towns via the Medway tunnel to the East and Strood to the West.

The unit can be used for offices, research and development, hi-tech uses, light industrial and warehouse. Use Classes B1 (current use) and B8 Planning.

Business rates- Rateable Value £9,700.

Offering occupancy under a licence with flexible terms. Call now to enquire and arrange viewing.

£22,000 Per Annum

Spectrum Business Centre Anthonys Way

Rochester, Kent, ME2 4NP

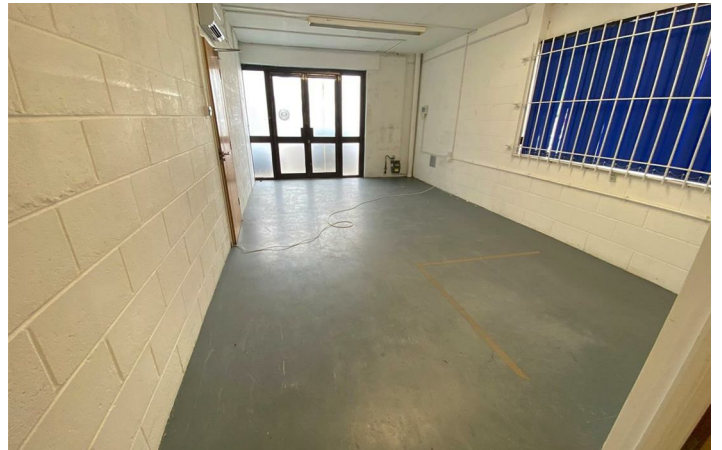
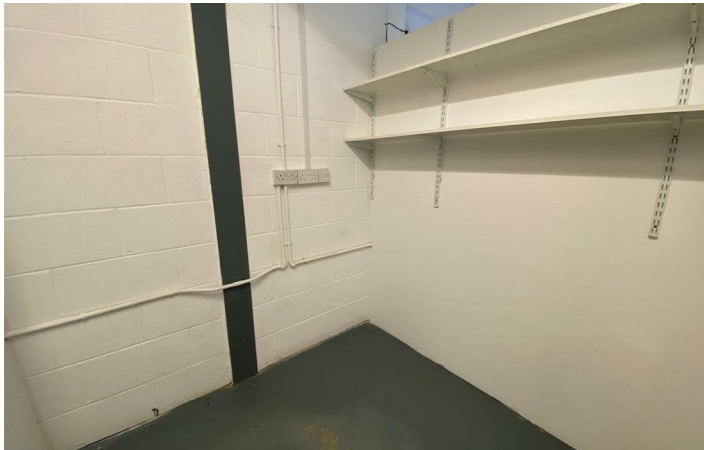


- SPACIOUS COMMERCIAL UNIT WITH MEZZANINE
- 2 W/C'S
- AVAILABLE NOW
- 1991 SQ FT
- GREAT LOCATION ON THE ESTABLISHED MEDWAY CITY ESTATE
- 2 PARKING SPACES
- AVAILABLE TO OCCUPY UNDER LICENCE



[Directions](#)

Tel: 01634730672





Energy Efficiency Rating		Current	Potential
Very energy efficient - lower running costs			
(92 plus) A			
(81-91) B			
(69-80) C			
(55-68) D			
(39-54) E			
(21-38) F			
(1-20) G			
Not energy efficient - higher running costs			
England & Wales		EU Directive 2002/91/EC	

Environmental Impact (CO ₂) Rating		Current	Potential
Very environmentally friendly - lower CO ₂ emissions			
(92 plus) A			
(81-91) B			
(69-80) C			
(55-68) D			
(39-54) E			
(21-38) F			
(1-20) G			
Not environmentally friendly - higher CO ₂ emissions			
England & Wales		EU Directive 2002/91/EC	

Greenleaf Property Services is a trading name of Greenleaf Property Services Limited.
 Registered Office: 281 Wilson Avenue, Rochester Kent ME1 2SS
 Registered No: 06222461 England. VAT No: 908929091

These particulars, whilst believed to be accurate are set out as a general outline only for guidance and do not constitute any part of an offer or contract. Intending purchasers should not rely on them as statements of representation of fact, but must satisfy themselves by inspection or otherwise as to their accuracy. No person in this firm's employment has the authority to make or give any representation or warranty in respect of the property.